



iPrint Advanced

An introduction

Robin Redgrave
Solutions Consultant
rredgrave@opentext.com

iPrint Appliance or iPrint Advanced for OES



Similar features in both

- Self Service driver install, Printing, WalkUp Printing

OES version does not have

- AirPrint printing
- AD Support (But does have option to use Azure AD)

iPrint Advanced is installed by default since OES 24.4

- Previously was not installed by default
 - Separate pattern on the install media
- OES version is only licensed for Desktop (including Chromebook) printing

Licensing



Desktop

- Windows/Mac/Chromebook printing

Mobile

- iOS and Android mobile printing

Enterprise

- Desktop and Mobile licenses

With your OES maintenance

- Desktop licenses for licensed OES users and Entitlement to run the appliance

Self Service Print Driver Install

The background of the slide is a digital artwork. It features a dark, starry sky with a large, blue, spherical planet or moon in the center. Below the planet, there is a horizon line with a bright, yellow and orange glow, suggesting a sunrise or sunset. The foreground shows a rugged, mountainous landscape with a body of water on the right side. A large, semi-transparent blue cross-like shape is visible in the upper right portion of the image.

Drivers



Driver store

- Administrator can upload printer drivers for each client platform/each printer

Driver Profile

- iPrint can push down default driver settings

Driver updates

- Updated printer drivers can be pushed down to users

Printer Driver Installation

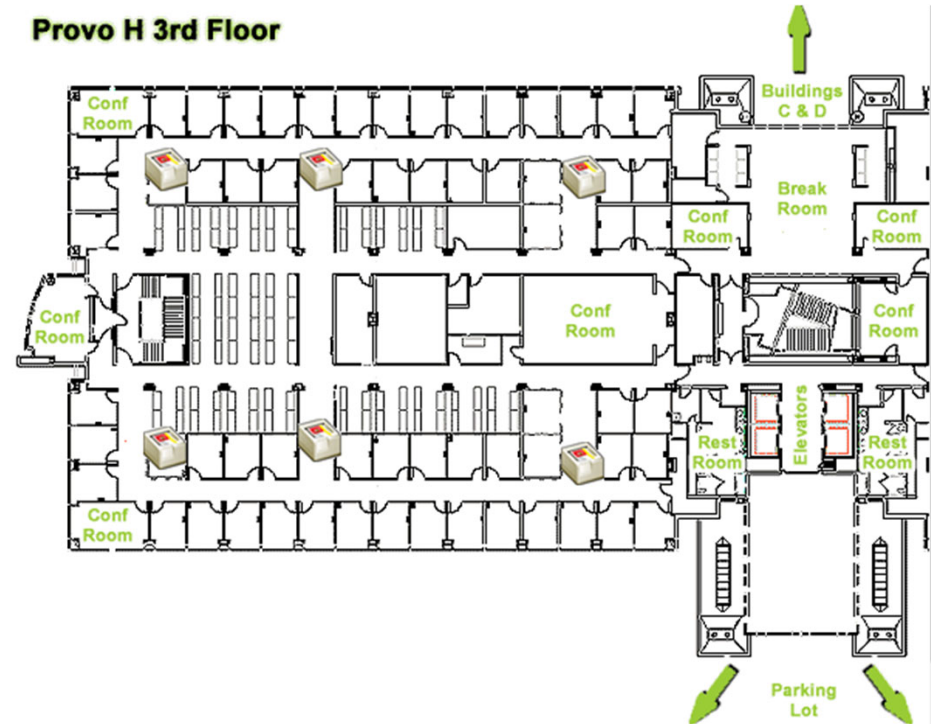
Can be installed from a map

- Map tool to create is available

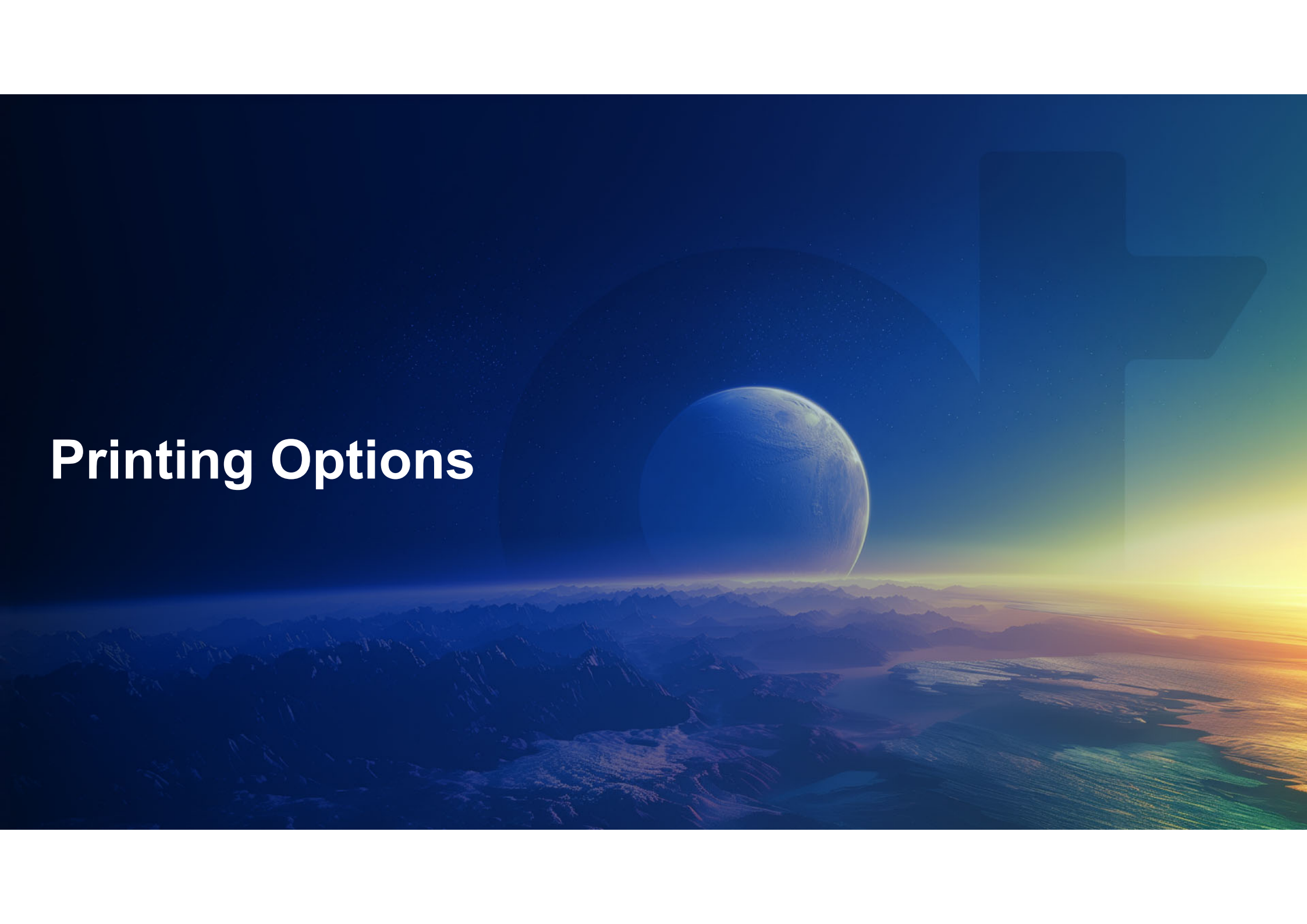
Or installed from the iPrint Portal

iPrint client needs to be installed

Provides traditional printing from an application



Printing Options



Traditional Printing



Standard printing from applications

- Just as users usually print from an application

Printer driver installed from the iPrint portal

- Or from maps/menu

Depending on security you may need to authenticate

- Can cache credentials

iPrint-Lite – Context Menu based printing



Lightweight version of desktop printing

- Just right click in File Explorer and print

No need to install a printer driver

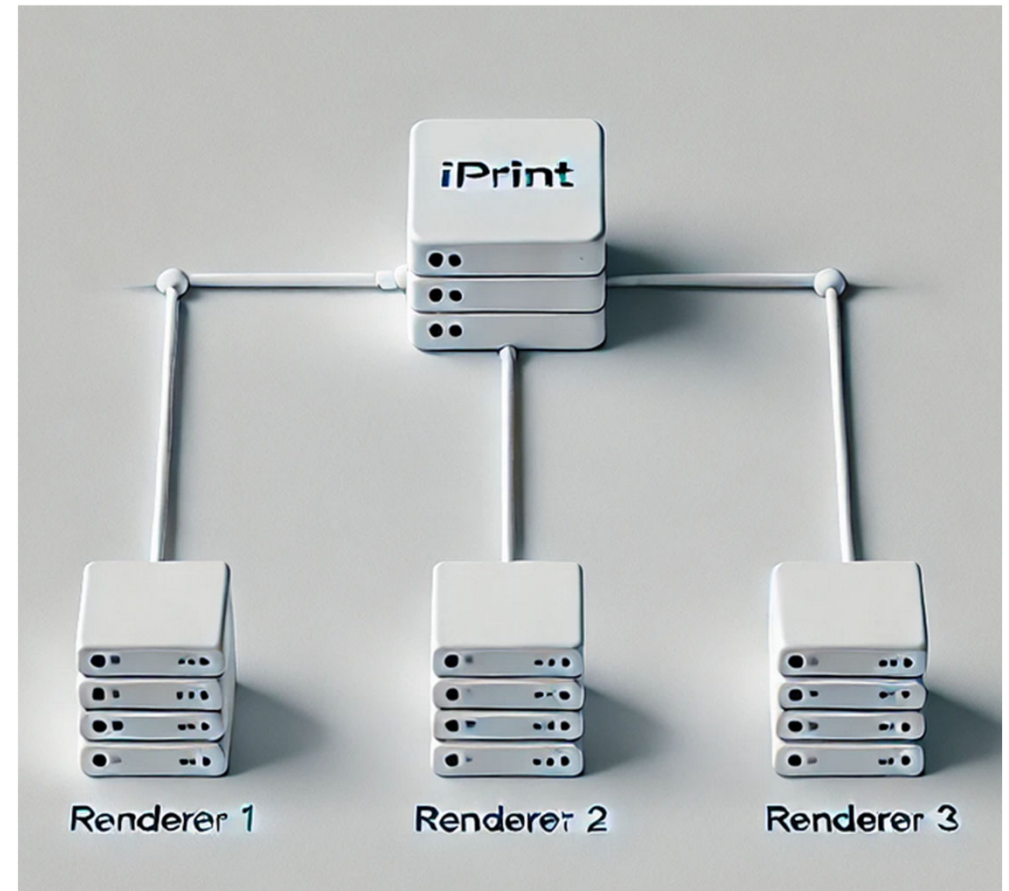
Unlike traditional printing no need to open the document

Needs to have the iPrint client installed

Printing Without a Printer Driver

The document can be rendered on the server
Both OES or appliance
Uses KeyView

Alternatively, a renderer(s) can be used
Windows with Office/Acrobat installed
Configured with the renderer agent
Server passes it the raw document
It is rendered
Passes it back to iPrint
iPrint sends it to the printer



Email printing



Print jobs can be submitted by email

- The appliance polls a mailbox regularly to pick up any new print jobs
- Uses POP or IMAP against a mailbox
- Have to specify the printer to print to in the subject line

Each printer can have an email address

- Easier for the end users

QuickPrint



Driverless printing

- No need to install a printer driver

User can print from most platforms from a web browser

The administrator can enable/disable this feature per printer

The printer capabilities are fetched dynamically

- Colour/Duplex printing etc

Mobile Printing (Mobile License Required)



Android and iOS clients

- iPrint client is available from the store

Can select printer from drop down

- Or by using a QR code

iOS devices can also use AirPrint

AirPrint Printing



Can expose printers as an AirPrint printer

- The Printer has to support AirPrint itself
- iPrint checks if the printer supports it
 - Before giving the option

Used by iOS/Mac devices to print

- iPad and iPhone

WalkUp printing



WalkUp Printing



Users can print to a WalkUp queue

- Print jobs are held until released to a specific printer
- Deleted after a specified period
- Unless all printers are the same you need to use a universal print driver.

Jobs can be released using

- Card release
 - Optional smartphone push Multi Factor Authentication with Advanced Authentication
- Mobile phone
 - Manual selection of printer
 - Use a QR code attached to the printer
- Web based release portal

Further Information



Further Information

Home Page

- <https://www.microfocus.com/en-us/products/iprint/overview>

Documentation

- <https://www.microfocus.com/documentation/iprint/iprint-5/>

Community forum

- <https://community.microfocus.com/collaboration/iprint/>

Further Information

OES and iPrint Monthly Product Update Webinar (registration)

Last Thursday of the month at 16:00 CET

Registration :



opentext™